



# TROPICAL STORM IMELDA BRIEFING

3:00 PM CDT

Tuesday, September 17, 2019

Prepared by:

*WFO Houston/Galveston*



@NWSHouston

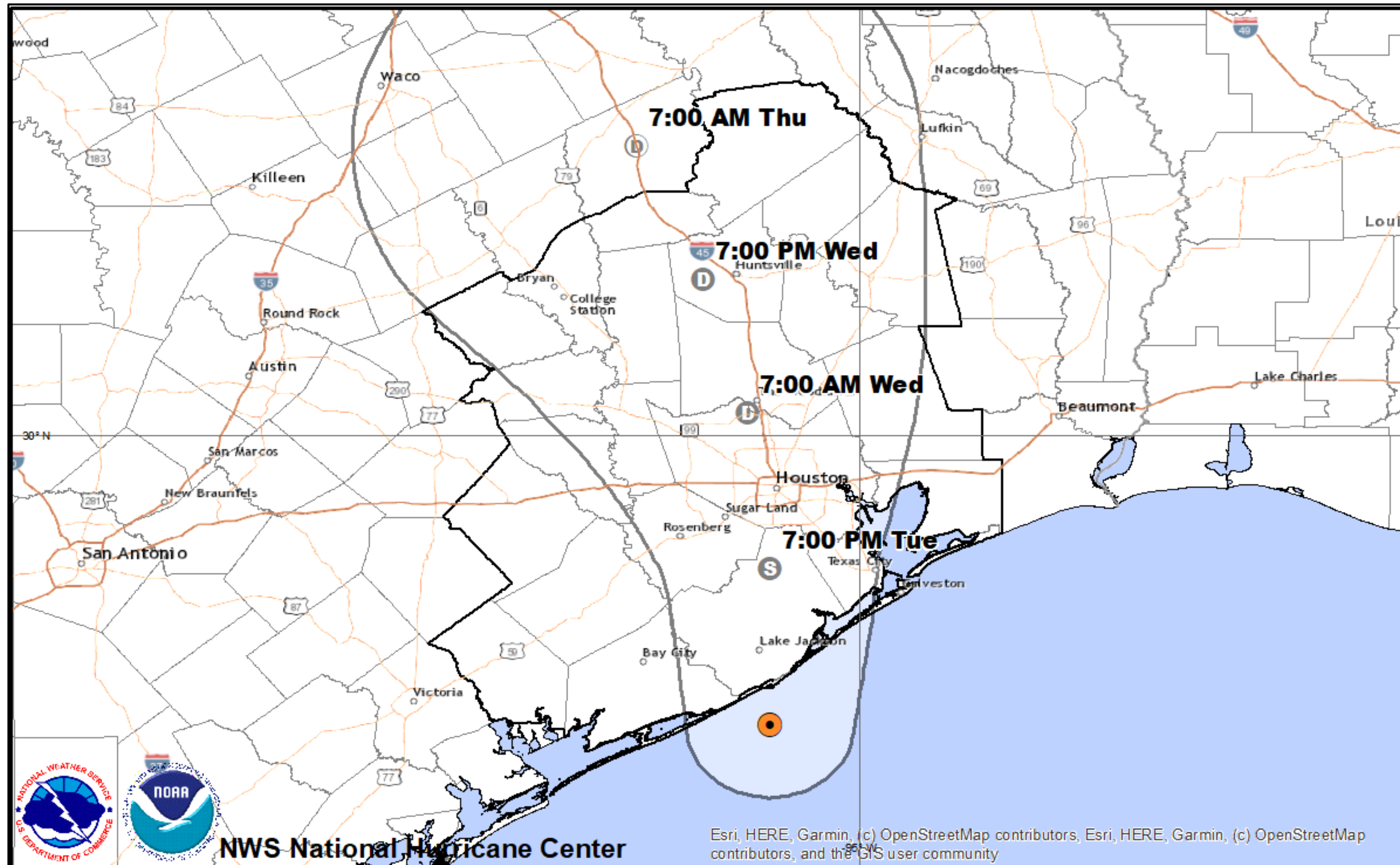
[www.weather.gov/Houston](http://www.weather.gov/Houston)

# TS Imelda Track Forecast

Tropical Storm Imelda



Houston/Galveston  
WEATHER FORECAST OFFICE



- Tropical Storm Imelda track – this will be updated after 4PM today with the new advisory. We will be continuing tropical storm warnings at that time.
- Tropical Storm Imelda has made landfall near Freeport TX at 1 PM.

Tropical Depression Eleven - Adv. 1 Tuesday September 17, 2019 12 PM ET

● Center Location: 28.7 N 95.4 W Max Sustained Winds: 35 mph Movement: N at 7 mph

Forecast Positions:

● Tropical Cyclone

○ Post/Potential TC

D < 39 mph S 39-73 mph

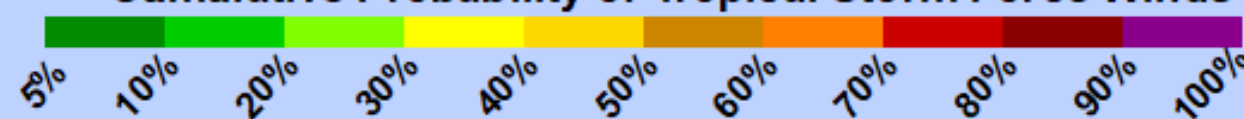
H 74-110 mph M > 110mph

Initial Surface Wind Field



Valid for 5 days ending 01 AM ET Sun Sep 22

Cumulative Probability of Tropical Storm Force Winds

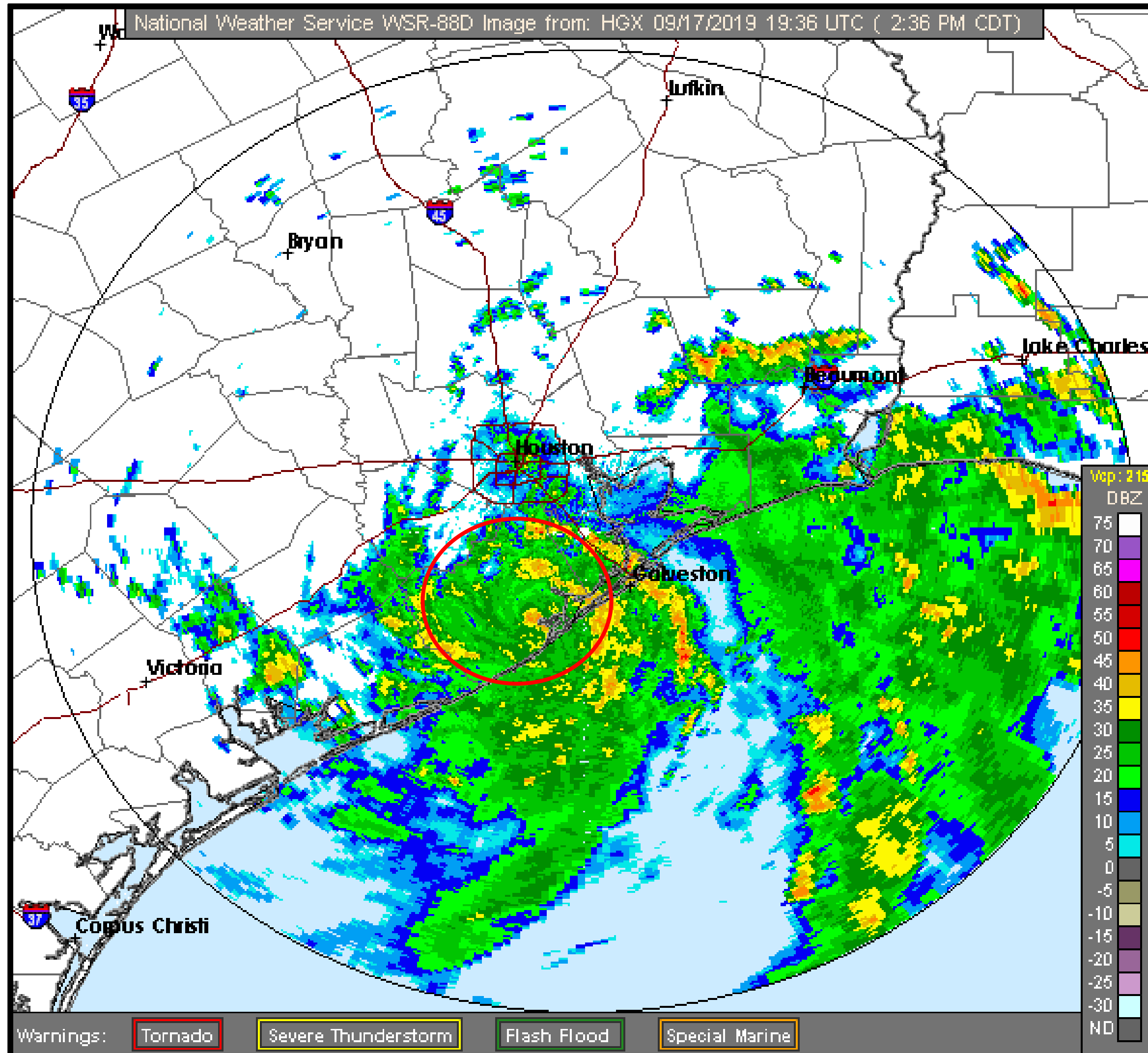


# Current Radar View

Tropical Storm Imelda



Houston/Galveston  
WEATHER FORECAST OFFICE



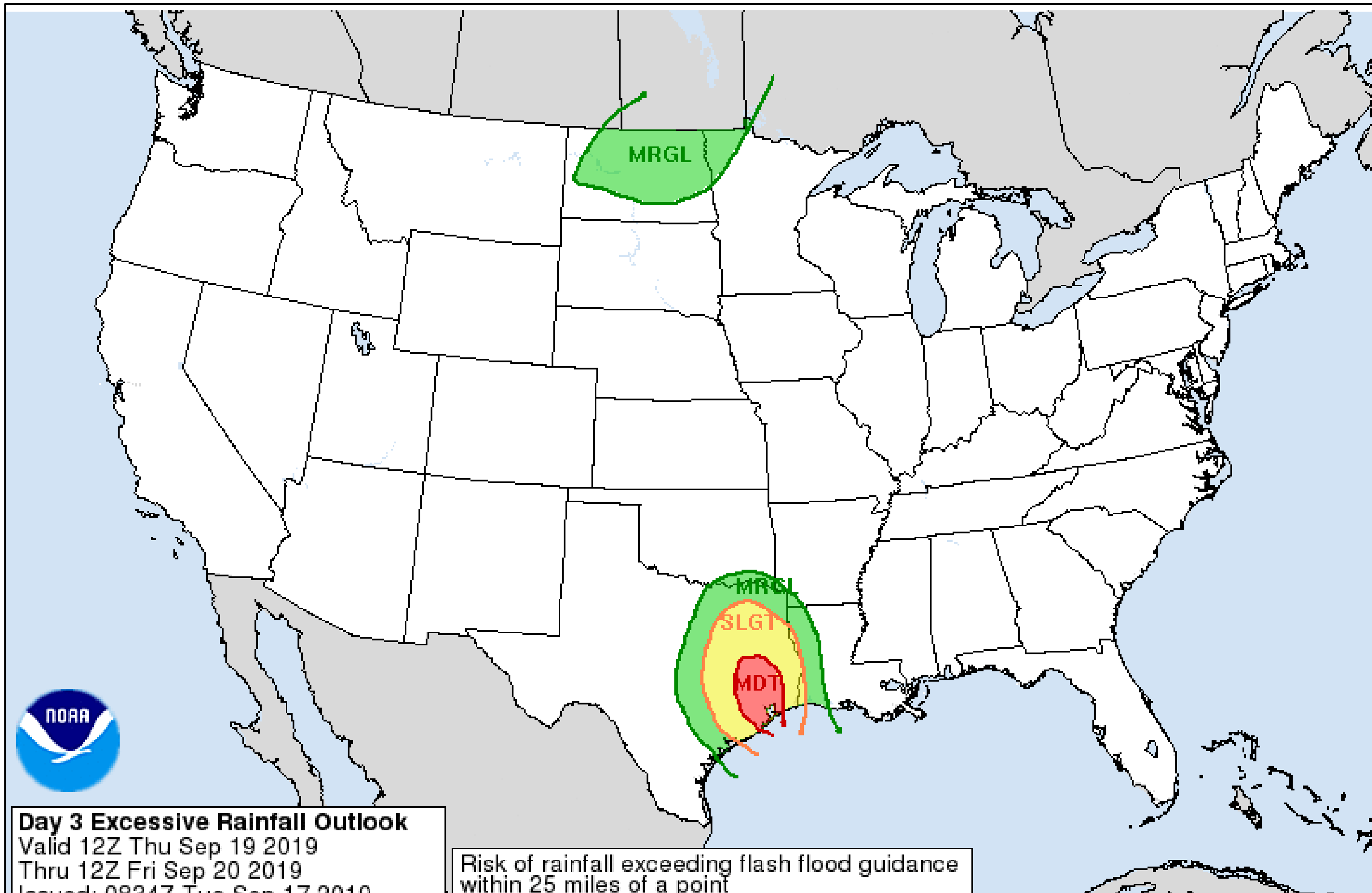
- Center of TS Imelda near Angleton to Freeport. It made landfall near Freeport.
- Rain bands should continue to increase tonight with heavy rainfall possible in training of storms. Rain rates will play a role in determining flooding impacts.

# Excessive Rainfall Outlook

Tropical Storm Imelda



Houston/Galveston  
WEATHER FORECAST OFFICE



- Areas outlined in red have the greatest potential for flash flooding Wednesday and likely continue into Thursday.

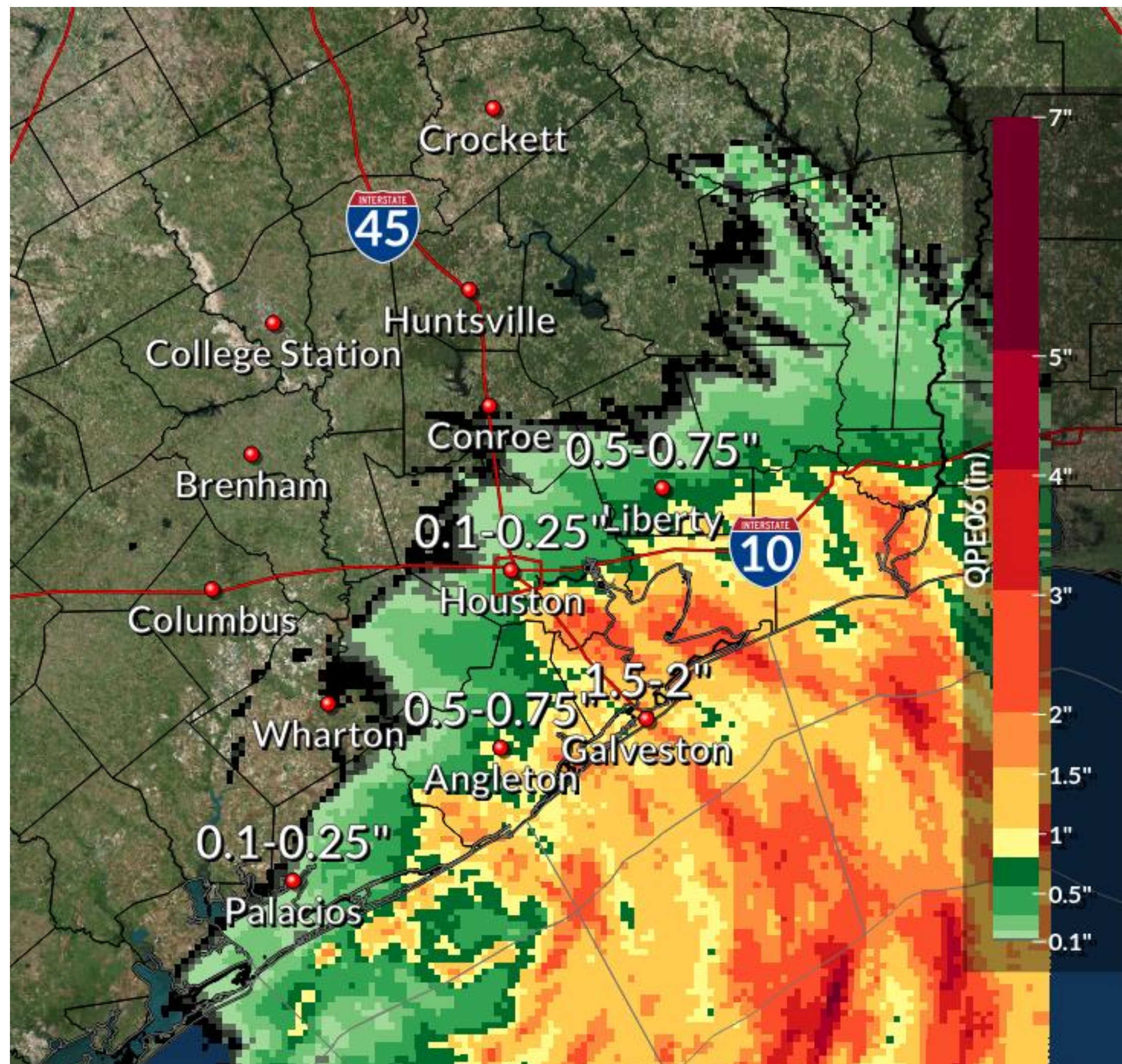
**Excessive Rainfall Outlook Valid Wednesday**

# Expected Storm Total Rainfall

Tropical Storm Imelda



Houston/Galveston  
WEATHER FORECAST OFFICE



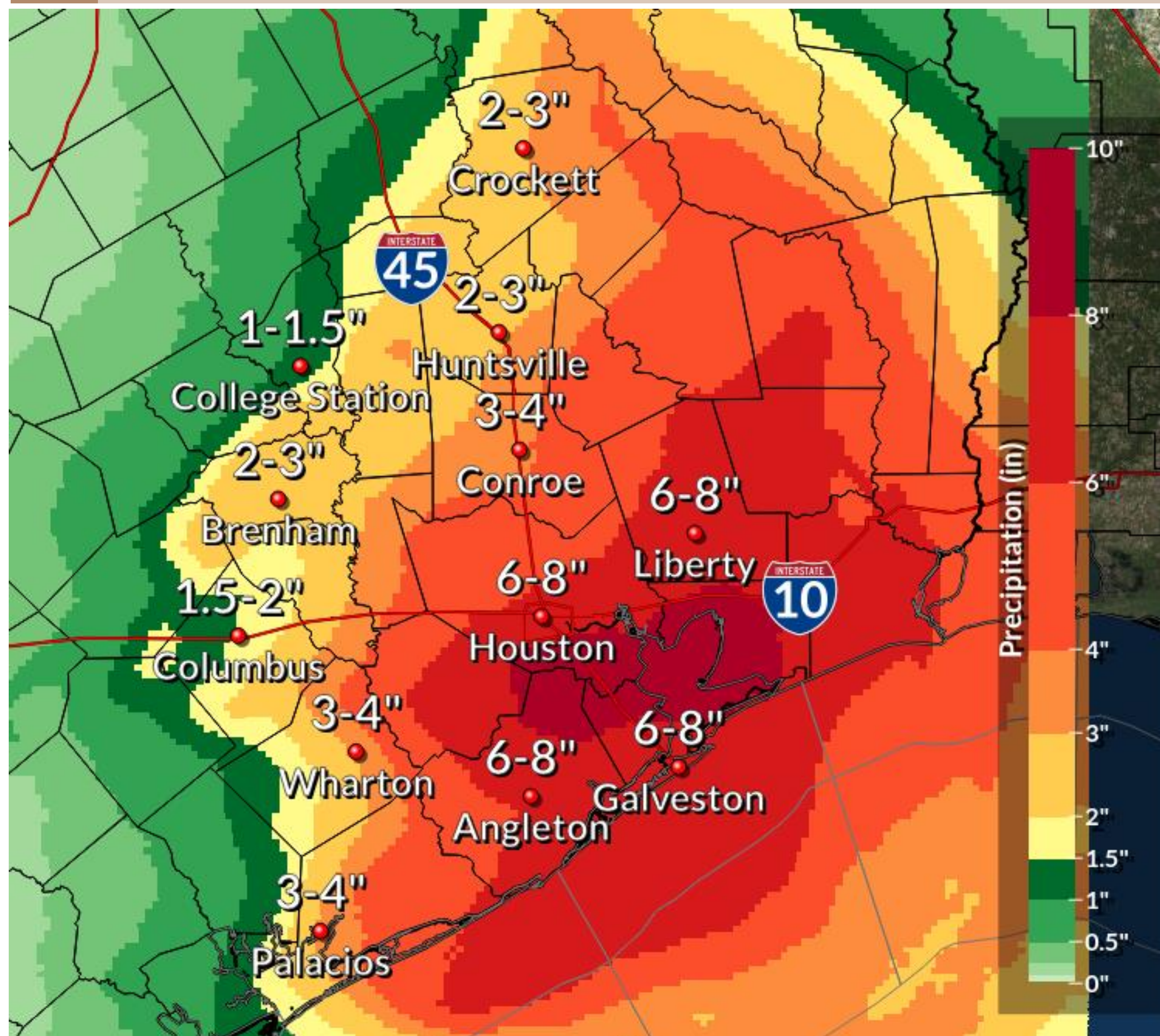
- Storm total rainfall 1 AM to 1 PM today
- Storm Total rainfall so far based on radar estimates shows the highest rainfall amounts confined to the coast.

# Expected Storm Total Rainfall

Tropical Storm Imelda



Houston/Galveston  
WEATHER FORECAST OFFICE



- Storm Total rainfall forecast valid tonight through 7PM Thursday.
- Overall tonight most rainfall will be from along US 59/I-69 from Wharton to Houston to Livingston or east/south of that line.
- Heavy rainfall shifts north late Wednesday into Thursday.

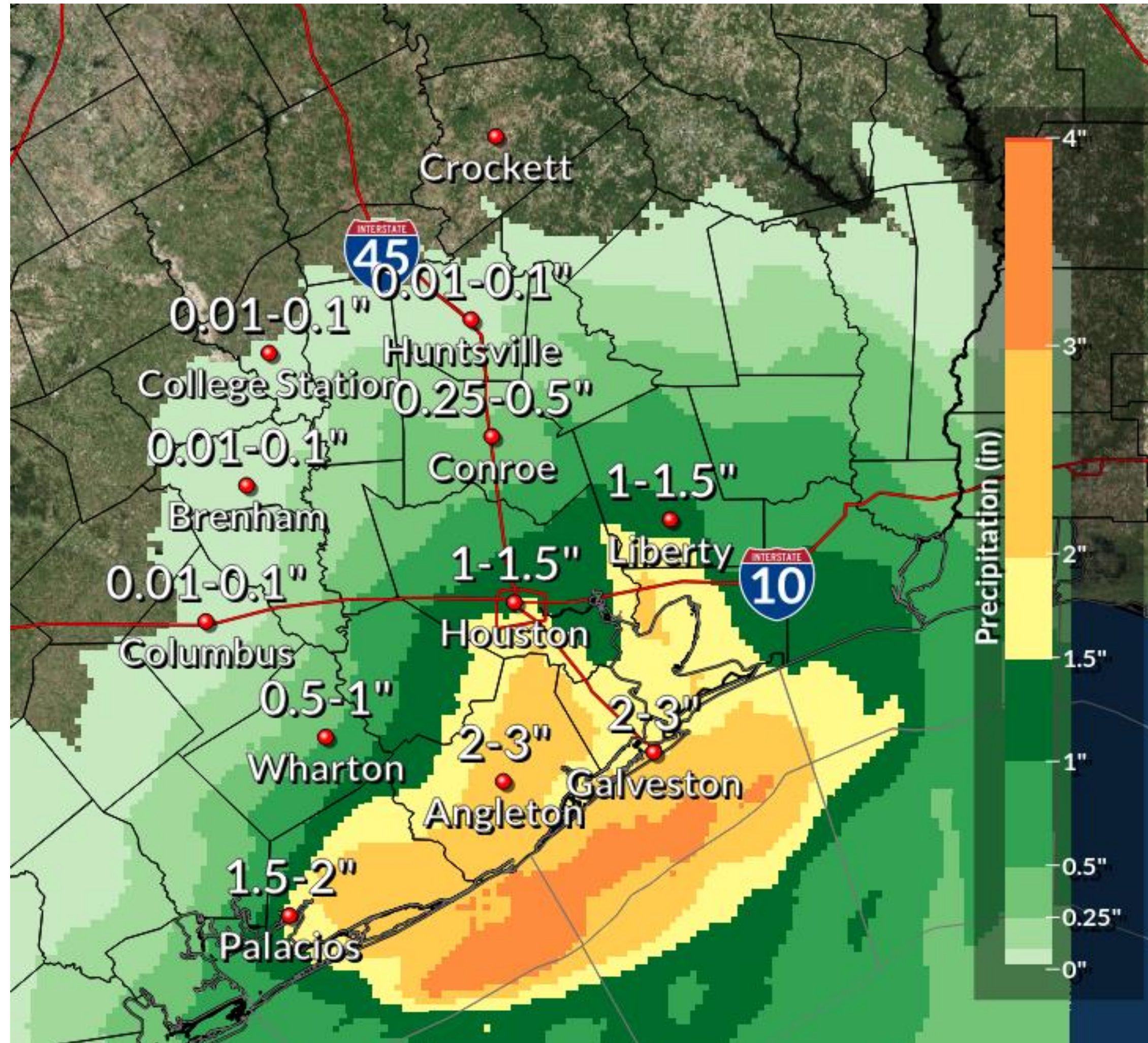
**Note:** There will likely be locally higher amounts

# Expected Storm Total Rainfall

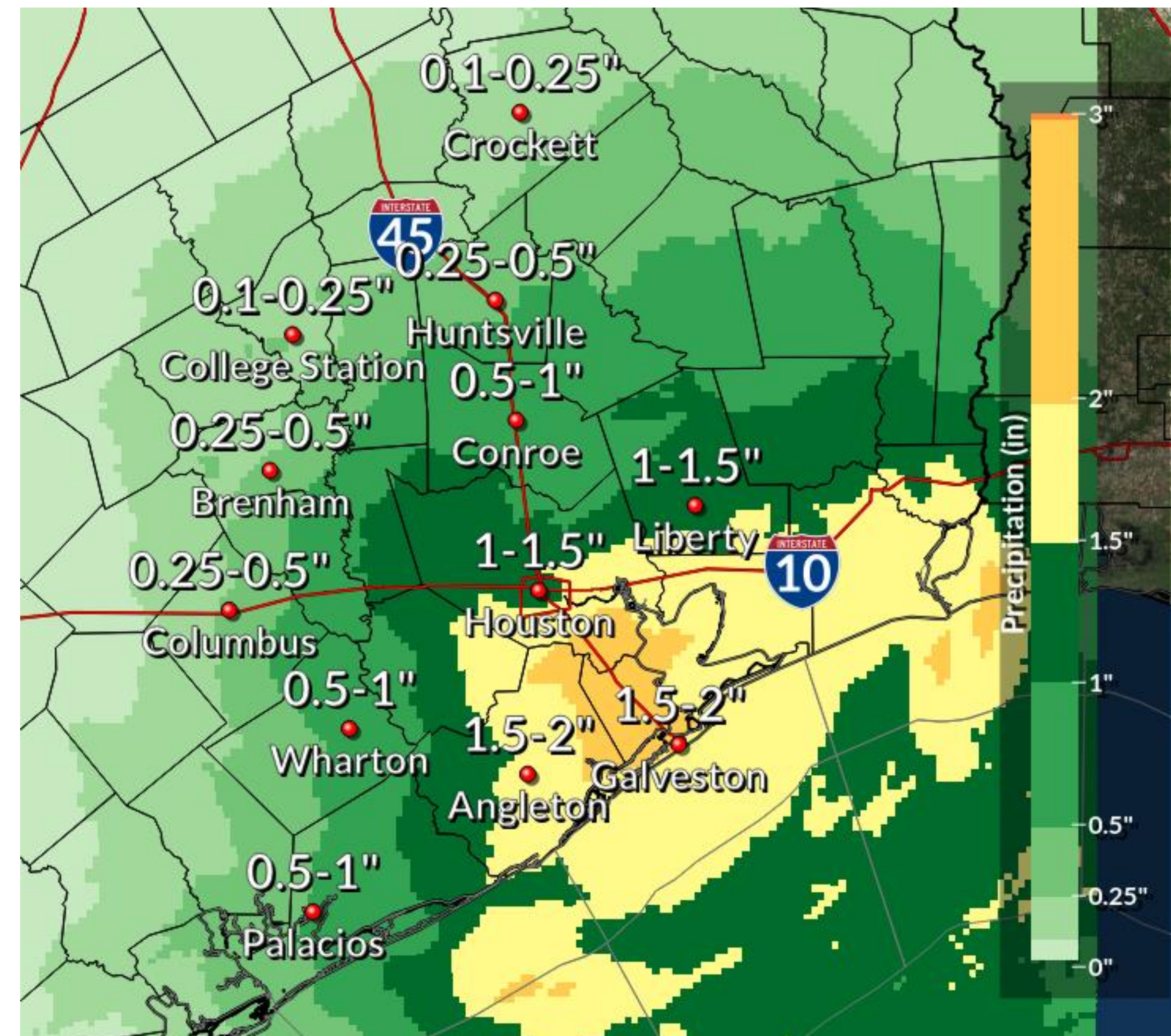
Tropical Storm Imelda



Houston/Galveston  
WEATHER FORECAST OFFICE



**Rainfall Forecast TONIGHT**



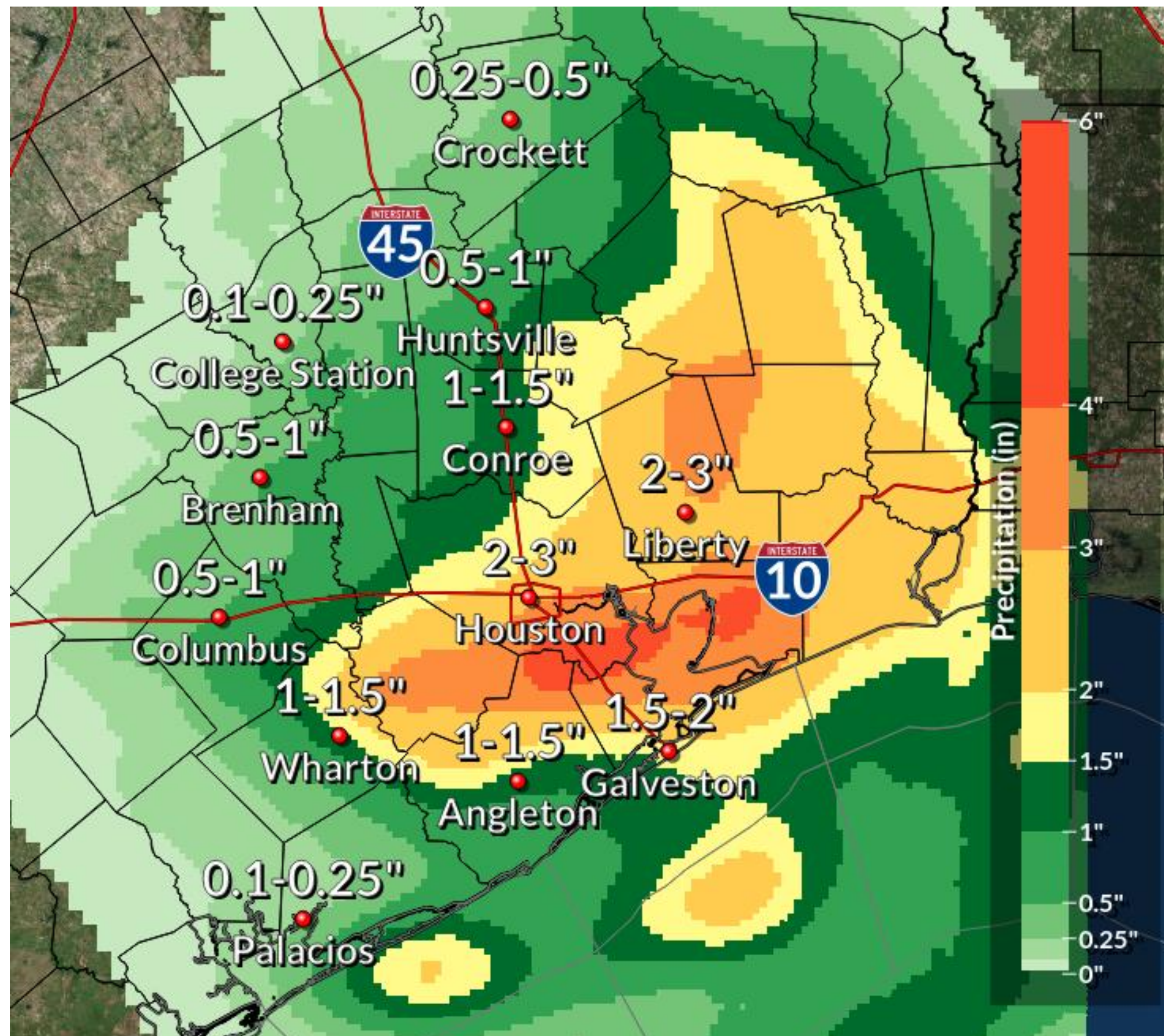
**Rainfall Forecast WEDNESDAY**

# Expected Storm Total Rainfall

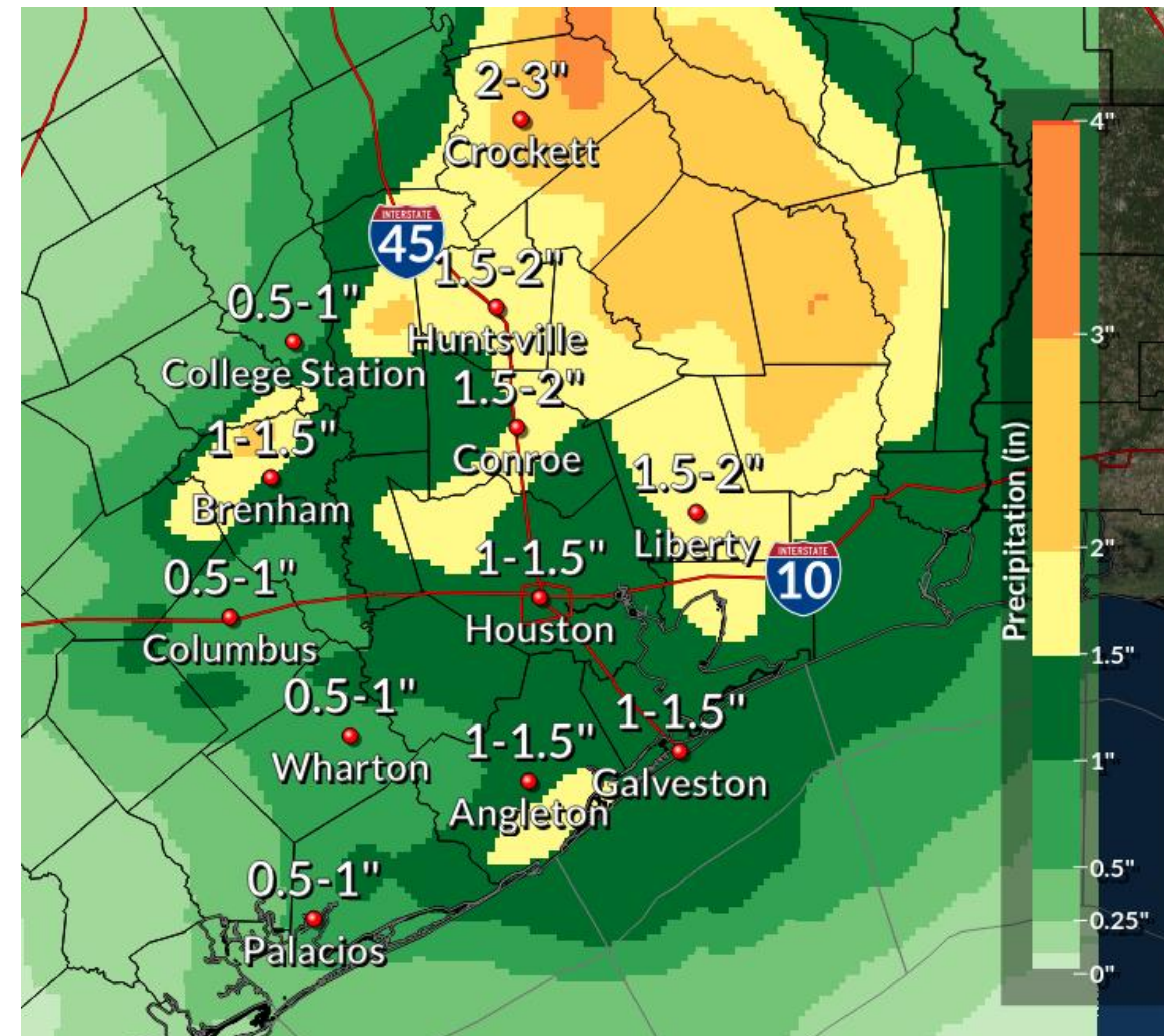
Tropical Storm Imelda



Houston/Galveston  
WEATHER FORECAST OFFICE



**Rainfall Forecast WEDNESDAY NIGHT**



**Rainfall Forecast THURSDAY**



# Key Take-Aways

Tropical Storm Imelda



Houston/Galveston  
WEATHER FORECAST OFFICE

- Main impact will be flooding from heavy rainfall – rises on rivers, close watch on bayou system for bayous out of banks, flooding of low lying areas.
- When - 2 Periods of potentially heavy rainfall.
  - Tonight going into Wednesday AM.
  - Wednesday night into Thursday as system moves north.
- Where – mainly along US-59/I-69 from Victoria to Houston to Livingston and areas south/east of that line. Threat shifts north Wednesday night into Thursday.
- Impacts dependent upon rainfall already fallen, run off, and rainfall rates in any stronger storms/training of storms.
- Do not focus on rainfall amounts.
- This event is more like a half marathon not a sprint.